

# TYPE SC3 HYDRO-LOCK SLEEVE



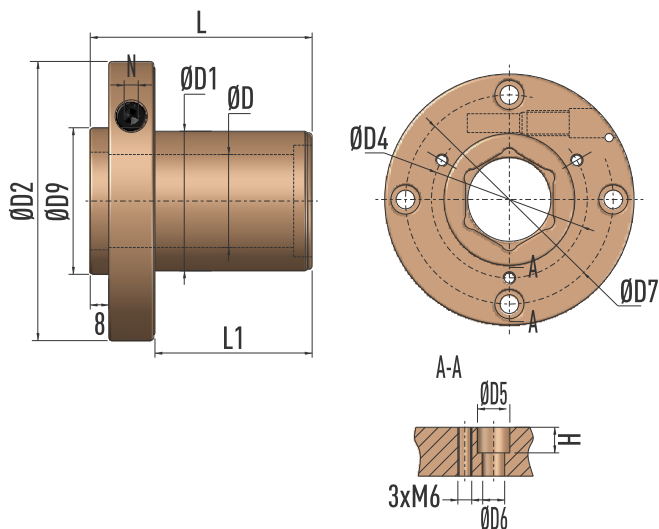
## Product Description

Type SC3 hydro-lock sleeve is for interchangeable tool assembly, and is suitable for machines with a hexagonal spindle profile.

Max. Speed: 9000 rpm.

## Highlight Features

1. Available with detachable transmission ring or non-detachable transmission ring and various bolt settings to match most machines in the market;
2. Key dimensions (i.e., inner, outer diameter, and end face) are machined with a one-time grinding process to ensure extremely high clamping accuracy;
3. Advanced surface nickel-plating prevents our products from corrosion and rust;
4. Easy and quick pressurization with an Allen T wrench.



## Accessories

SKU: G902 01021 Metric Internal Hexagonal Insert Ø46xL39.5



## Product Specifications

SKU	Product	D	D1	D2	D4	D5	D6	D7	D9	L	L1	H	N
G012 05420	SC3 40/60 x 96-7	40	60	120	75	14	9	100	63	96	68	11	6

Please note that all the dimensions in the above table are in metric (mm).