



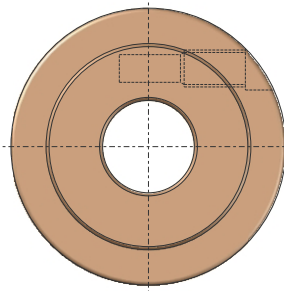
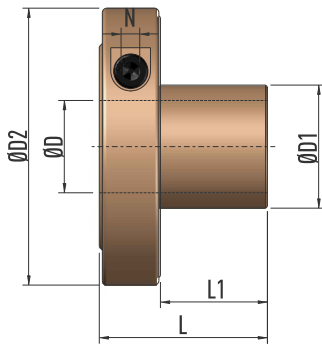
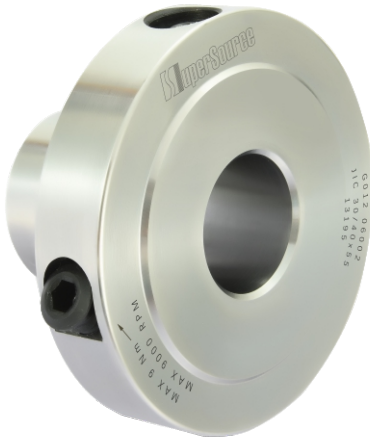
Product Description

Type JIC hydro-lock sleeve is for interchangeable tool assembly, which is commonly used for knife grinding and testing.

Max. Speed: 9000 rpm.

Highlight Features

1. Special manufacturing processes ensure extremely high geometric precision at the two end faces, significantly improve the grinding quality and test accuracy of knives;
2. Easy and quick pressurization with an Allen T wrench;
3. Advanced surface nickel-plating prevents our products from corrosion and rust.



Product Specifications

| SKU | Product | D | D1 | D2 | L | L1 | N |
|------------|-----------------|----|-----|-----|----|----|---|
| G012 06001 | JIC 40/60 x 55 | 40 | 60 | 120 | 55 | 35 | 6 |
| G012 06002 | JIC 30/40 x 55 | 30 | 40 | 90 | 55 | 35 | 6 |
| G012 06003 | JIC 30/60 x 55 | 30 | 60 | 90 | 55 | 35 | 6 |
| G012 06004 | JIC 60/80 x 50 | 60 | 80 | 90 | 50 | 30 | 6 |
| G012 06005 | JIC 40/80 x 50 | 40 | 80 | 140 | 50 | 30 | 6 |
| G012 06006 | JIC 40/120 x 50 | 40 | 120 | 190 | 50 | 30 | 6 |

Please note that all the dimensions in the above table are in metric (mm).