

TYPE BI HYDRO-LOCK SLEEVE



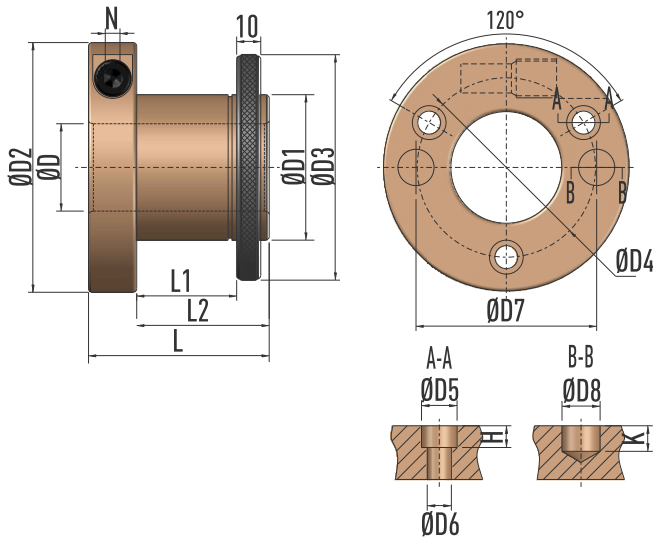
Product Description

Type BI hydro-lock sleeve is for interchangeable tool assembly. Used for assembly of cutterheads and saw blades on moulders, rip saws, and tenoners. The design allows mounting of multiple tools and quick switch between tools.

Max. Speed: 9000 rpm.

Highlight Features

1. Easy and quick pressurization with an Allen T wrench;
2. We offer a comprehensive range of products to match most grips in the market;
3. The built-in lock nuts enable an easy and accurate tool adjustment and promote operation safety;
4. With accessories, multiple tools can be mounted and operated simultaneously.



Product Specifications

SKU	Product	D	D1	D2	D3	D4	D5	D6	D7	D8	L	L1	L2	H	N	K
G012 01003-01005	BI 1-1/2"/50 x (85-135)	1-1/2"	50	100-117	83	64	14	9.5	65	15	85/135	50/100	65/115	8.5	8	10
G012 01006-01009	BI 1-13/16"/60 x (75-140)	1-13/16"	60	102-117	90	74	14	9.5	75	15	75/115/140	40/80/105	55/95/120	8.5	8	10
G012 01010-01013	BI 1-13/16"/65 x (85-135)	1-13/16"	65	108-117	98	80	14	9.5	80	15	85/135	50/100	65/115	8.5	8	10
G012 01014-01018	BI 2-1/8"/65 x (85-135)	2-1/8"	65	108-117	98	80	14	9.5	80	15	85/135	50/100	65/115	8.5	8	10
G012 01510-01515	BI 40/50 x (75-140)	40	50	102-117	83	64	14	9.5	65	15	75/95/115/140	40/60/80/105	55/75/95/120	8.5	8	10
G012 01516-01521	BI 40/60 x (75-140)	40	60	102-117	90	74	14	9.5	75	15	75/95/115/140	40/60/80/105	55/75/95/120	8.5	8	10
G012 01530-01536	BI 50/60 x (75-140)	50	60	108-117	90	74	14	9.5	75	15	75/95/115/140	40/60/80/105	55/75/95/120	8.5	8	10

Please note that except for the dimensions marked in imperial, all the other dimensions in the above table are in metric (mm).