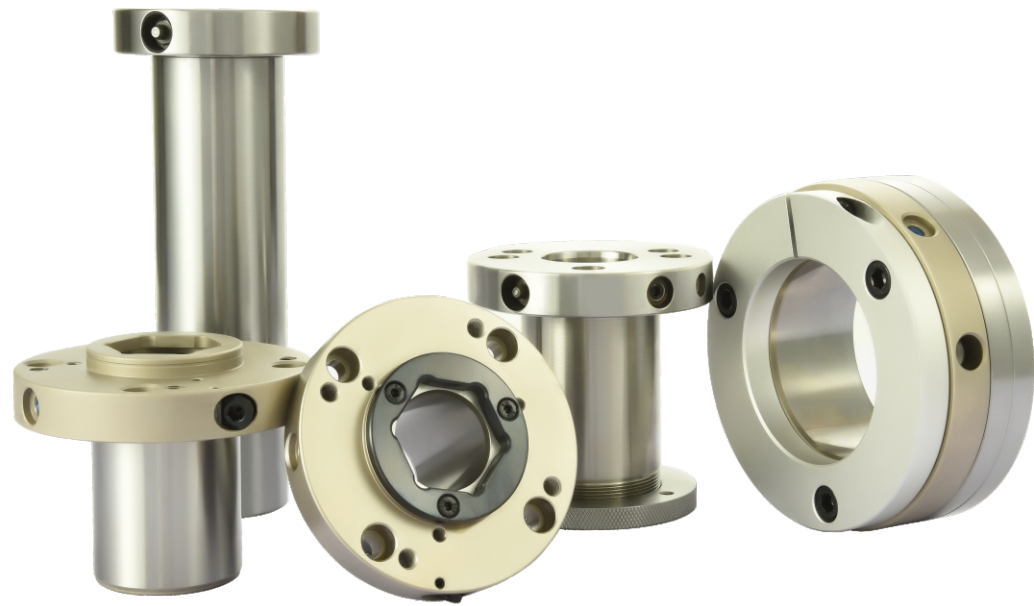


HYDRO-LOCK SLEEVES |



SuperSource hydro-lock sleeves are a cost-effective solution for wood processing applications that require quick fastening and high precision self-centering of tools. The principle is to use the liquid medium to transmit the expansion force, between the inner ring of the expansion sleeve and the shaft, and between the outer ring and the hub. The generated surface tension between the two parts ensures high-precision automatic centering and locking of the hub and the shaft. We offer two types of hydro-lock sleeves depending on the pressurizing modes, pressurized through Allen screws or a high-pressure grease pump. We provide various bolt connection setting to allow compatibility of our product with the most machine in the market.

To meet the diversified market demand, we have continued introducing new products. We successively launched various high-end products such as SB3, SC3, AIL, and SQS2. With advanced manufacturing, testing, and quality control management, our products lead the industry in critical technical parameters such as concentricity and radial runout and have a cost-effective advantage over similar products in the market. Besides our standard products, we also offer a comprehensive range of custom products to meet any special requirements.

PRESSURIZING SYSTEMS

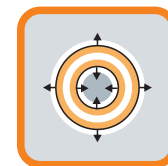


Pressure Screw Pressurizing system - pressure setting and tools assembly are achieved by fastening the Allen screw on the hydro-lock sleeve using T-wrench. Loosening the screws for quick disassembly and replacement of the tools.

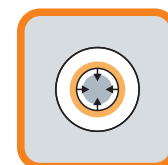


Grease Pump Pressurizing System - use a high-pressure grease pump to set the pressure according to product specifications.

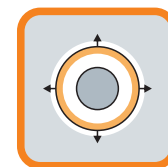
ASSEMBLY MODE



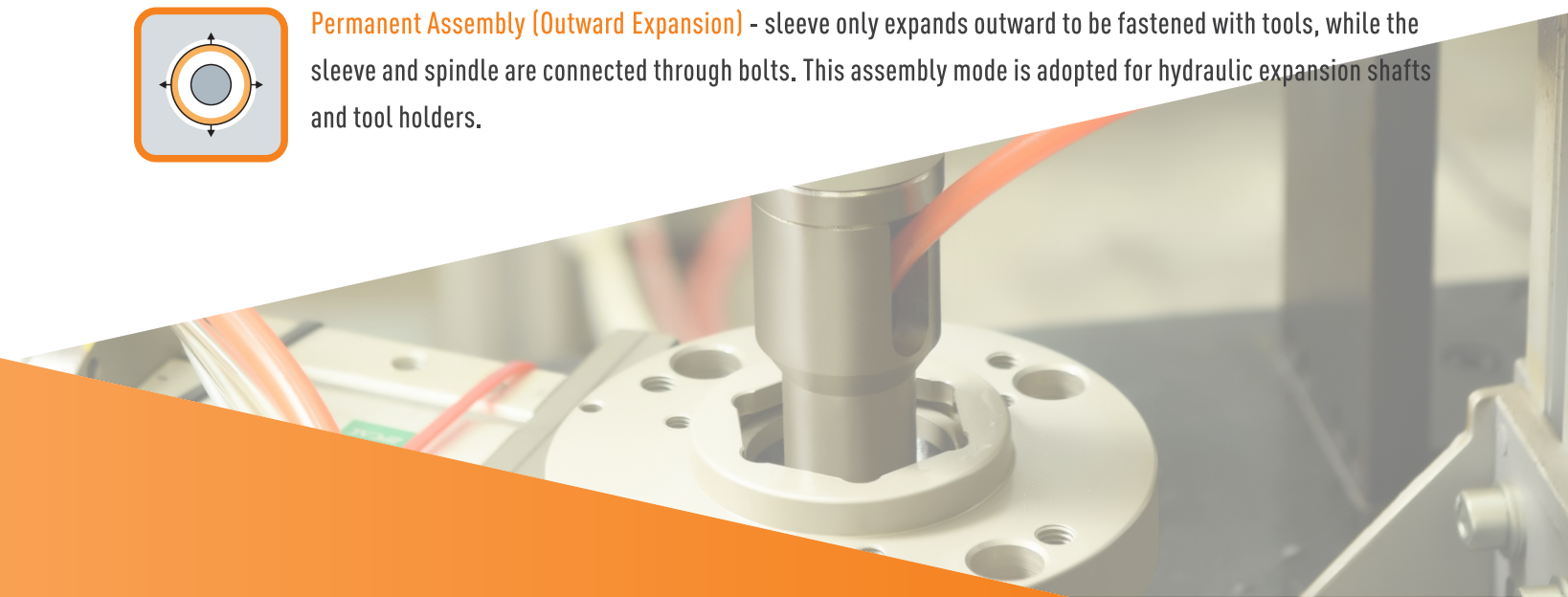
Interchangeable Assembly - sleeve expands both inward and outward (i.e., the inner ring expands to clamp with the spindle and the outer ring expands to connect with the tools) to achieve automatic centering between spindle and tools. This assembly mode enables quick and easy change of tools.



Permanent Assembly (Inward Expansion) - sleeve only expands inward to clamp with the spindle, while the sleeve and tools are connected through bolts. This assembly mechanism is structurally simple and the sleeves with this mode are typically smaller in size.



Permanent Assembly (Outward Expansion) - sleeve only expands outward to be fastened with tools, while the sleeve and spindle are connected through bolts. This assembly mode is adopted for hydraulic expansion shafts and tool holders.



TYPE B HYDRO-LOCK SLEEVE



TYPE C HYDRO-LOCK SLEEVE

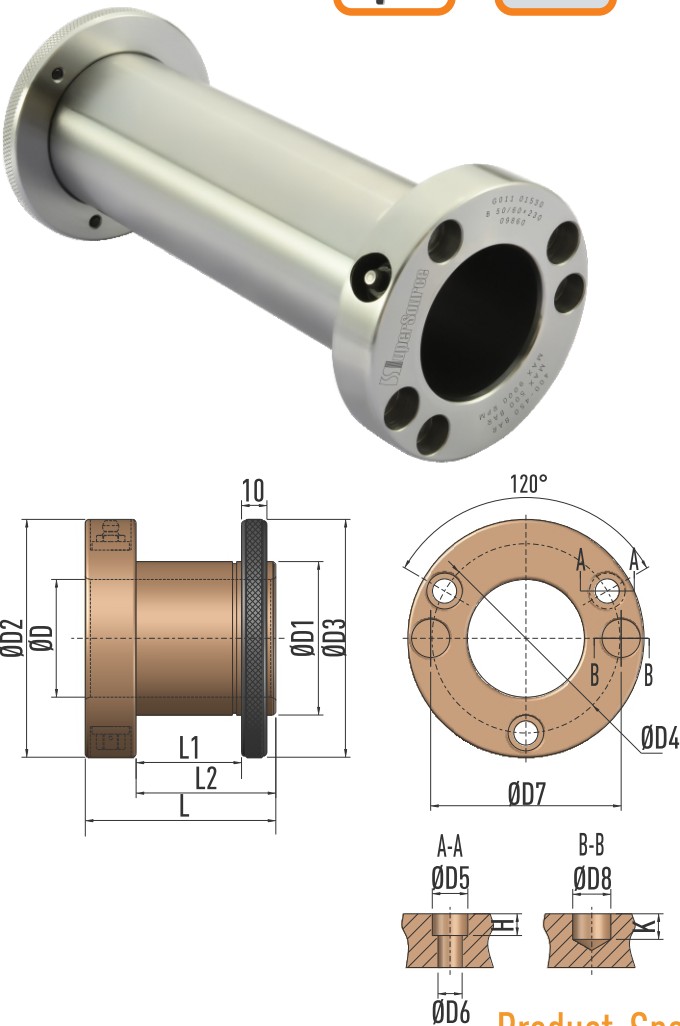


Product Description

Type B hydro-lock sleeve is for interchangeable tool assembly. Used for assembly of cutterheads and saw blades on moulders, rip saws, and tenoners. The design allows mounting of multiple tools and quick switch between tools. Max. Speed: 9000 rpm, Operation Pressure: 40-45MPa.

Highlight Features

- 1. Pressurized with grease pump for easy and quick tool assembly;
- 2. We offer a comprehensive range of products to match most grips in the market;
- 3. The built-in lock nuts enable an easy and accurate tool adjustment and promote operation safety;
- 4. With accessories, multiple tools can be mounted and operated simultaneously.



Product Specifications

SKU	Product	D	D1	D2	D3	D4	D5	D6	D7	D8	L	L1	L2	H	K
G011 01003-01005	B 1-1/2"/50 x (85-185)	1-1/2"	50	83	83	64	14	9.5	65	15	85/135/185	50/100/150	65/115/165	8.5	10
G011 01006-01009	B 1-13/16"/60 x (75-190)	1-13/16"	60	93	90	74	14	9.5	75	15	75/115/140/190	40/80/105/155	55/95/120/170	8.5	10
G011 01010-01013	B 1-13/16"/65 x (85-235)	1-13/16"	65	98	98	80	14	9.5	80	15	85/135/185/235	50/100/150/200	65/115/165/215	8.5	10
G011 01014-01018	B 2-1/8"/65 x (85-270)	2-1/8"	65	98	98	80	14	9.5	80	15	85/135/185/235/270	50/100/150/200/250	65/115/165/215/265	8.5	10
G011 01511-01515	B 40/50 x (75-190)	40	50	83	83	64	10	6	65	15	75/115/140/165/190	40/80/105/130/155	55/95/120/145/170	5.5	10
G011 01516-01521	B 40/60 x (75-215)	40	60	93	90	74	14	9.5	75	15	75/95/115/140/165/215	40/60/80/105/130/180	55/75/95/120/145/195	8.5	10
G011 01530-01536	B 50/60 x (75-240)	50	60	93	90	74	14	9.5	75	15	75/95/115/140/190/230/240	40/60/80/105/155/195/205	55/75/95/120/170/210/220	8.5	10
G011 01630-01633	B 50/59.96 x (75-140)	50	59.96	93	90	74	14	9.5	75	15	75/115/140	40/80/105	55/95/120	8.5	10

Please note that except for the dimensions marked in imperial, all the other dimensions in the above table are in metric (mm).

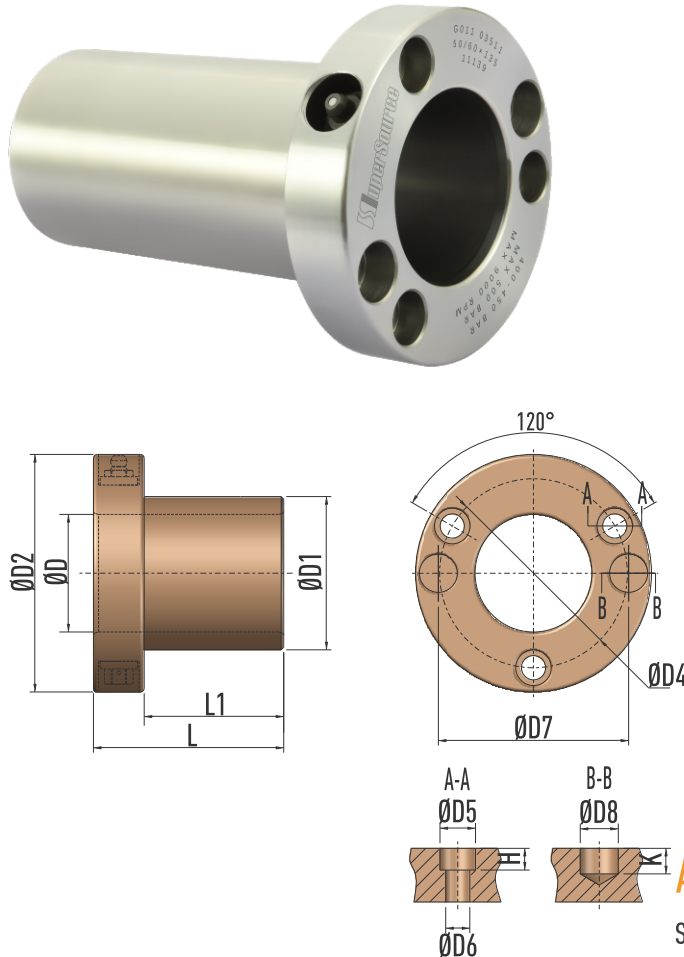


Product Description

Type C hydro-lock sleeve is for interchangeable tool assembly. Used for assembly of cutterheads and saw blades on moulders, rip saws, and tenoners. The design allows mounting of multiple tools and quick switch between tools. Max. Speed: 9000 rpm, Operation Pressure: 40-45MPa.

Highlight Features

- 1. Pressurized with grease pump for easy and quick tool assembly;
- 2. We offer a comprehensive range of products to match most grips in the market;
- 3. With accessories, multiple tools can be mounted and operated simultaneously.



Accessories (for Type B, C, D grease pump pressurized sleeves)

- SKU: H90109008
Metric Zerc Grease Inlet Fitting M10x1.0
- SKU: H90109009
Metric Grease Release Valve M10x1.0



Product Specifications

SKU	Product	D	D1	D2	D4	D5	D6	D7	D8	L	L1	H	K
G011 03006	C 1-13/16"/60 x 75	1-13/16"	60	93	74	14	9.5	75	15	75	55	8.5	10
G011 03010-03020	C 1-13/16"/65 x (85-285)	1-13/16"	65	98	80	14	9.5	80	15	85/135/235/285	65/115/215/265	8.5	10
G011 03516-03522	C 40/50 x (75-190)	40	50	83	64	10	6	65	15	75/95/115/165/190	55/75/95/145/170	5.5	10
G011 03530-03535	C 50/60 x (75-230)	50	60	93	74	14	9.5	75	15	75/95/115/140/230	55/75/95/120/210	8.5	10

Please note that except for the dimensions marked in imperial, all the other dimensions in the above table are in metric (mm).

TYPE BI HYDRO-LOCK SLEEVE



TYPE CI HYDRO-LOCK SLEEVE

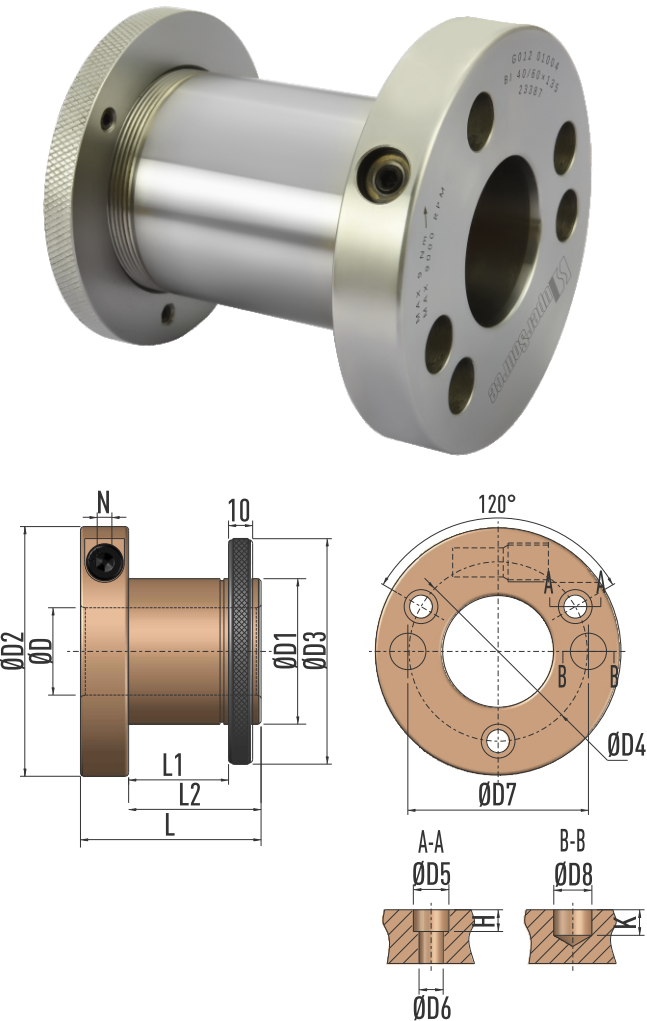


Product Description

Type BI hydro-lock sleeve is for interchangeable tool assembly. Used for assembly of cutterheads and saw blades on moulders, rip saws, and tenoners. The design allows mounting of multiple tools and quick switch between tools. Max. Speed: 9000 rpm.

Highlight Features

- 1. Easy and quick pressurization with an Allen T wrench;
- 2. We offer a comprehensive range of products to match most grips in the market;
- 3. The built-in lock nuts enable an easy and accurate tool adjustment and promote operation safety;
- 4. With accessories, multiple tools can be mounted and operated simultaneously.



Product Specifications

SKU	Product	D	D1	D2	D3	D4	D5	D6	D7	D8	L	L1	L2	H	N	K
G012 01003-01005	BI 1-1/2"/50 x (85-135)	1-1/2"	50	100-117	83	64	14	9.5	65	15	85/135	50/100	65/115	8.5	8	10
G012 01006-01009	BI 1-13/16"/60 x (75-140)	1-13/16"	60	102-117	90	74	14	9.5	75	15	75/115/140	40/80/105	55/95/120	8.5	8	10
G012 01010-01013	BI 1-13/16"/65 x (85-135)	1-13/16"	65	108-117	98	80	14	9.5	80	15	85/135	50/100	65/115	8.5	8	10
G012 01014-01018	BI 2-1/8"/65 x (85-135)	2-1/8"	65	108-117	98	80	14	9.5	80	15	85/135	50/100	65/115	8.5	8	10
G012 01510-01515	BI 40/50 x (75-140)	40	50	102-117	83	64	14	9.5	65	15	75/95/115/140	40/60/80/105	55/75/95/120	8.5	8	10
G012 01516-01521	BI 40/60 x (75-140)	40	60	102-117	90	74	14	9.5	75	15	75/95/115/140	40/60/80/105	55/75/95/120	8.5	8	10
G012 01530-01536	BI 50/60 x (75-140)	50	60	108-117	90	74	14	9.5	75	15	75/95/115/140	40/60/80/105	55/75/95/120	8.5	8	10

Please note that except for the dimensions marked in imperial, all the other dimensions in the above table are in metric (mm).

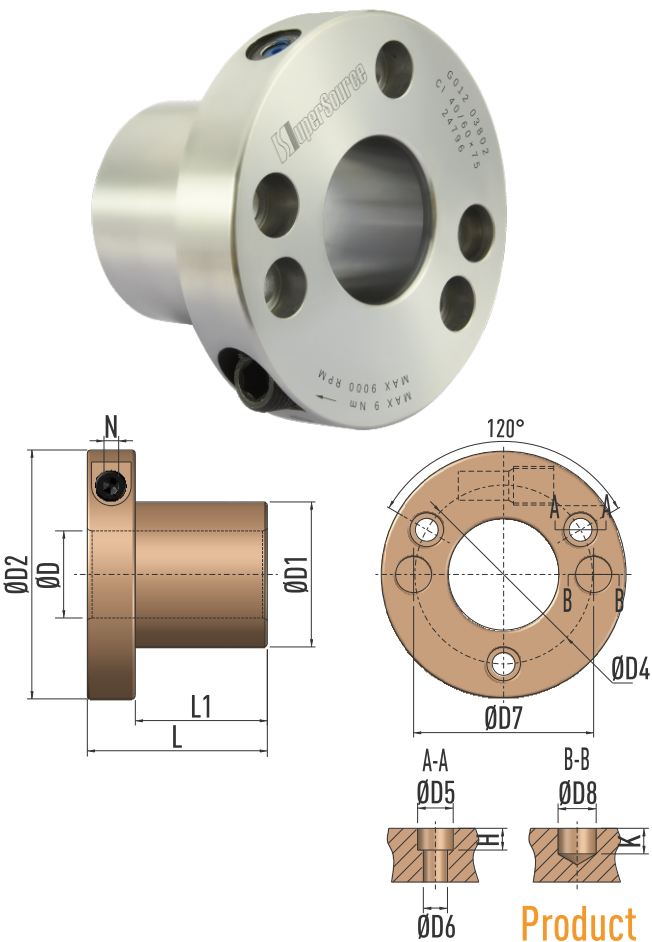


Product Description

Type CI hydro-lock sleeve is for interchangeable tool assembly. Used for assembly of cutterheads and saw blades on moulders, rip saws, and tenoners. The design allows mounting of multiple tools and quick switch between tools. Max. Speed: 9000 rpm.

Highlight Features

- 1. Easy and quick pressurization with an Allen T wrench;
- 2. We offer a comprehensive range of products to match most grips in the market;
- 3. With accessories, multiple tools can be mounted and operated simultaneously.



Product Specifications

SKU	Product	D	D1	D2	D4	D5	D6	D7	D8	L	L1	H	N	K
G012 03003	CI 1-1/2"/50 x 85	1-1/2"	50	102	64	14	9.5	65	15	85	65	8.5	8	10
G012 03006	CI 1-13/16"/60 x 75	1-13/16"	60	102	74	14	9.5	75	15	75	55	8.5	8	10
G012 03010	CI 1-13/16"/65 x 85	1-13/16"	65	108	80	14	9.5	80	15	85	65	8.5	8	10
G012 03511	CI 40/50 x 75	40	50	102	64	14	9.5	65	15	75	55	8.5	8	10
G012 03516	CI 40/60 x 75	40	60	102	74	14	9.5	75	15	75	55	8.5	8	10
G012 03517	CI 40/60 x 95	40	60	108	74	14	9.5	75	15	95	75	8.5	8	10
G012 03518	CI 40/60 x 115	40	60	108	74	14	9.5	75	15	115	95	8.5	8	10
G012 03530	CI 50/60 x 75	50	60	102	74	14	9.5	75	15	75	55	8.5	8	10
G012 03531	CI 50/60 x 95	50	60	108	74	14	9.5	75	15	95	75	8.5	8	10
G012 03532	CI 50/60 x 115	50	60	108	74	14	9.5	75	15	115	95	8.5	8	10

Please note that except for the dimensions marked in imperial, all the other dimensions in the above table are in metric (mm).

TYPE SB3 HYDRO-LOCK SLEEVE



TYPE SC3 HYDRO-LOCK SLEEVE



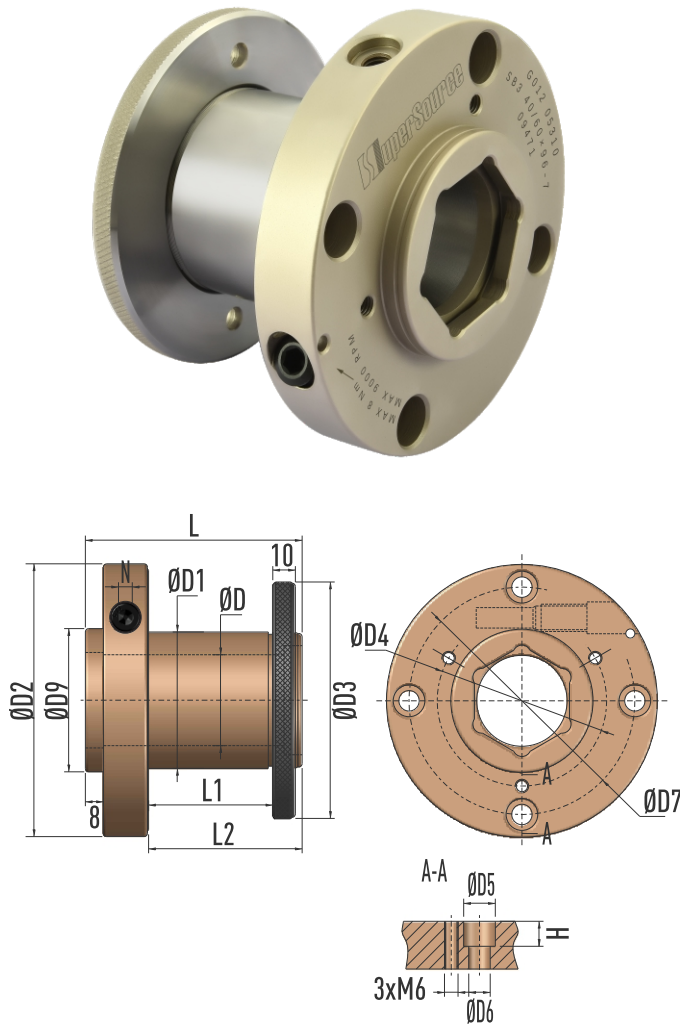
Product Description

Type SB3 hydro-lock sleeve is for interchangeable tool assembly, and is suitable for machines with a hexagonal spindle profile.

Max. Speed: 9000 rpm.

Highlight Features

- 1. Available with detachable transmission ring or non-detachable transmission ring and various bolt settings to match most machines in the market;
- 2. Key dimensions (i.e., inner, outer diameter, and end face) are machined with a one-time grinding process to ensure extremely high clamping accuracy;
- 3. Advanced surface nickel-plating prevents our products from corrosion and rust;
- 4. Easy and quick pressurization with an Allen T wrench;
- 5. The built-in scaled lock nuts enable easy and accurate tool adjustment and promote operation safety.



Accessories

- SKU: G901 01111 Metric Ajustment Ring Ø93xd70x9
- SKU: G901 01115 Metric Locking Ring Ø98xd88x2
- SKU: G901 01110 Metric V-shape Spring Ø95xd62x4x0.9
- SKU: G902 01021 Metric Internal Hexagonal Insert Ø46xL39.5



Product Specifications

SKU	Product	D	D1	D2	D3	D4	D5	D6	D7	D9	L	L1	L2	H	N
G012 05410	SB3 40/60 x 96-7	40	60	120	104	75	14	9	100	63	96	58.5	68	11	6

Please note that all the dimensions in the above table are in metric (mm).



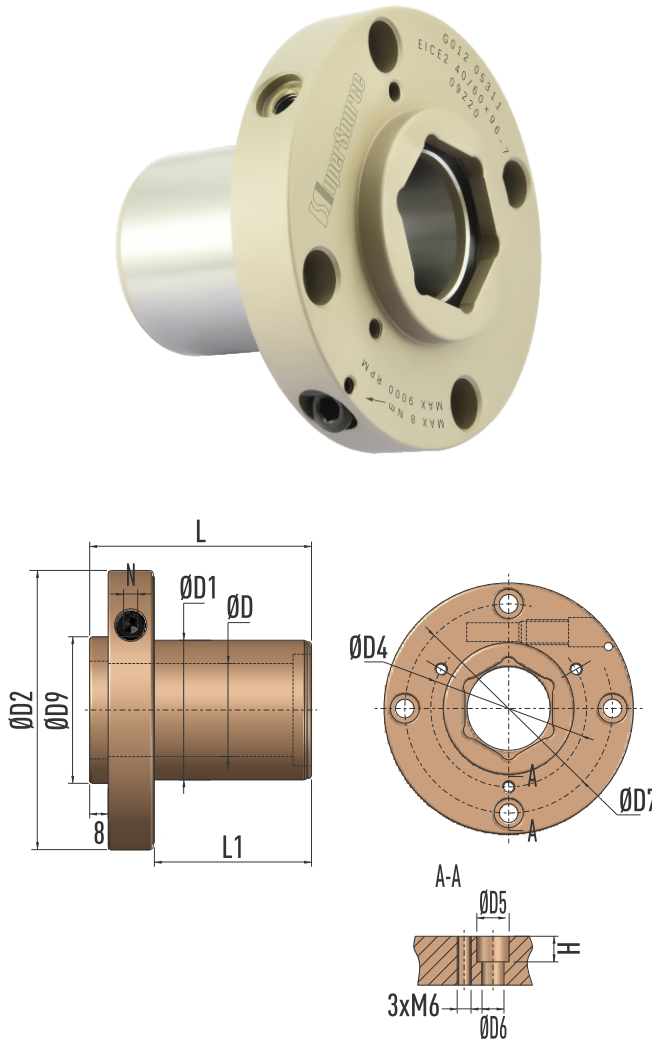
Product Description

Type SC3 hydro-lock sleeve is for interchangeable tool assembly, and is suitable for machines with a hexagonal spindle profile.

Max. Speed: 9000 rpm.

Highlight Features

- 1. Available with detachable transmission ring or non-detachable transmission ring and various bolt settings to match most machines in the market;
- 2. Key dimensions (i.e., inner, outer diameter, and end face) are machined with a one-time grinding process to ensure extremely high clamping accuracy;
- 3. Advanced surface nickel-plating prevents our products from corrosion and rust;
- 4. Easy and quick pressurization with an Allen T wrench.



Accessories

- SKU: G902 01021 Metric Internal Hexagonal Insert Ø46xL39.5



Product Specifications

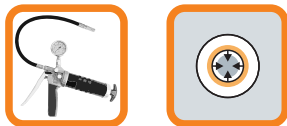
SKU	Prodcut	D	D1	D2	D4	D5	D6	D7	D9	L	L1	H	N
G012 05420	SC3 40/60 x 96-7	40	60	120	75	14	9	100	63	96	68	11	6

Please note that all the dimensions in the above table are in metric (mm).

TYPE D HYDRO-LOCK SLEEVE



TYPE JIC HYDRO-LOCK SLEEVE

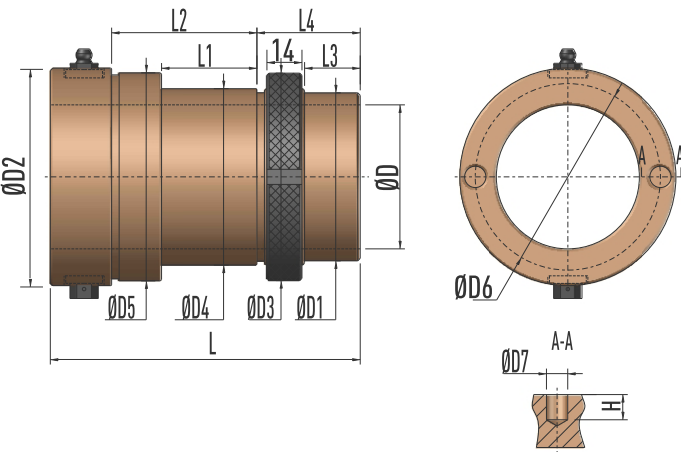


Product Description

Type D hydro-lock sleeve is for assembly of support bearings for machines with bearings at both ends of the spindle.
Max. Speed: 9000 rpm, Operation Pressure: 40-45MPa.

Highlight Features

- 1. Pressurized with grease pump for easy and quick assembly;
- 2. Compact in size along the radial direction, structurally stable;
- 3. The built-in lock nuts enable an easy and accurate tool adjustment and promote operation safety.



Product Specifications

SKU	Product	D	D1	D2	D3	D4	D5	D6	D7	L	L1	L2	L3	L4	H
G011 70006	D 2-1/4"/2.756" x 4-7/8" 2-1/4"	66.68	86.36	82.55	2.756"	82.55	74	8.5	4-7/8"	38.1	58.05	22.23	41.28	10	
G011 70007	D 3"/3.544" x 5-5/8"	3"	85.73	111	111	3.544"	-	-	-	5-5/8"	50.8	-	25.25	47.55	-

G011 70008 D 3-15/16"/6" x 2-1/2" 3-15/16" - 189.4 189.4 6" - - - 2.5" 3.5 - - 34.6 -
Please note that except for the dimensions marked in imperial, all the other dimensions in the above table are in metric (mm).

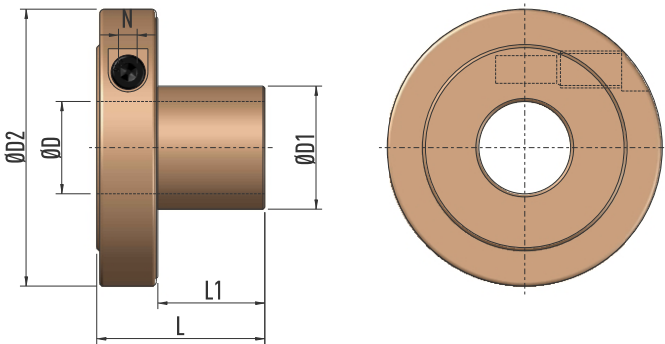
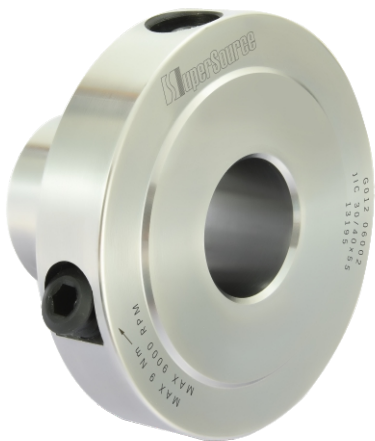


Product Description

Type JIC hydro-lock sleeve is for interchangeable tool assembly, which is commonly used for knife grinding and testing.
Max. Speed: 9000 rpm.

Highlight Features

- 1. Special manufacturing processes ensure extremely high geometric precision at the two end faces, significantly improve the grinding quality and test accuracy of knives;
- 2. Easy and quick pressurization with an Allen T wrench;
- 3. Advanced surface nickel-plating prevents our products from corrosion and rust.



Product Specifications

SKU	Product	D	D1	D2	L	L1	N
G012 06001	JIC 40/60 x 55	40	60	120	55	35	6
G012 06002	JIC 30/40 x 55	30	40	90	55	35	6
G012 06003	JIC 30/60 x 55	30	60	90	55	35	6
G012 06004	JIC 60/80 x 50	60	80	90	50	30	6
G012 06005	JIC 40/80 x 50	40	80	140	50	30	6
G012 06006	JIC 40/120 x 50	40	120	190	50	30	6

Please note that all the dimensions in the above table are in metric (mm).

TYPE AIL HYDRO-LOCK SLEEVE



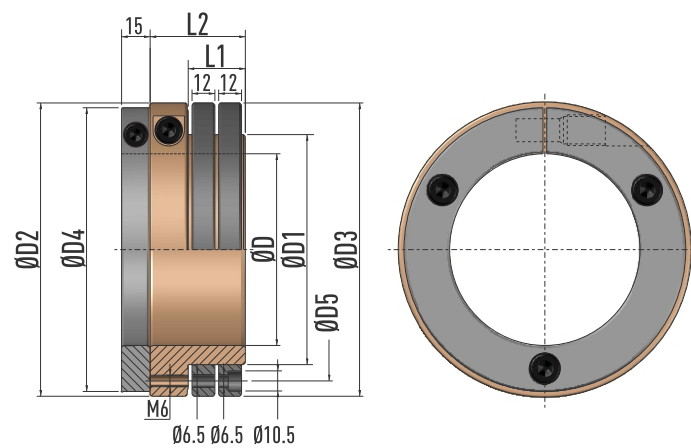
Product Description

Type AIL hydro-lock sleeve connects with tools by a safety lock collar; multiple sleeves can be assembled on the same spindle for multi-segment cutting.

Max. Speed: 9000 rpm.

Highlight Features

1. Advanced surface nickel-plating ensures high resistance to corrosion and rust;
2. Easy and quick pressurization with an Allen T wrench;
3. Multiple sleeves can be assembled on the same spindle to enable multi-segment cutting.



Product Specifications

SKU	Product	D	D1	D2	D3	D4	D5	L1	L2
G012 02601	AIL 60/80 x 50	60	80	113	113	108	97	30	50
G012 02602	AIL 80/100 x 50	80	100	133	133	128	117	30	50
G012 02603	AIL 100/120 x 50	100	120	153	153	148	137	30	50
G012 02604	AIL 100/115 x 50	100	115	153	153	148	131	30	50
G012 02605	AIL 90/110 x 50	90	110	153	153	148	131	30	50

Please note that all the dimensions in the above table are in metric (mm).

TYPE SQS2 PNEUMATIC CHUCK



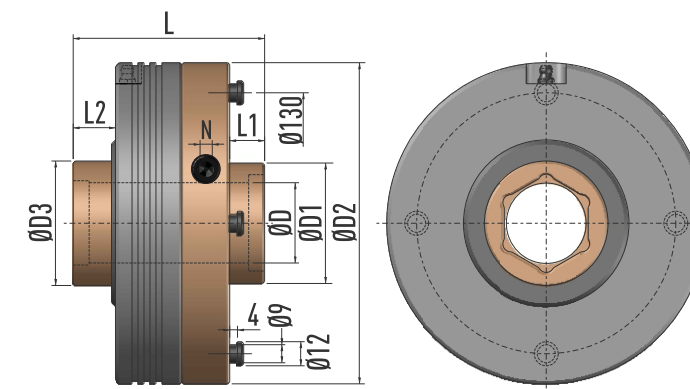
Product Description

Type SQS2 pneumatic hydro-lock chuck connects with tools by a pneumatic pull stud. It is compatible with most double-end milling, automatic feeding machines, disc milling or flanges.

Max. Speed: 9000 rpm.

Highlight Features

1. Advanced surface nickel-plating ensures high resistance to corrosion and rust;
2. Easy and quick pressurization with an Allen T wrench;
3. Pneumatic locking significantly simplifies the assembly and disassembly of the tools, and improves the production rate.



Product Specifications

SKU	Product	D	D1	D2	D3	L	L1	L2	N
G012 05901	SQS2 40/60 x 96	40	60	160	62	96	35	3.7	6
G012 05902	SQS2 40/80 x 96	40	80	160	62	96	17.5	21.2	6

Please note that all the dimensions in the above table are in metric (mm).

HYDRAULIC EXPANSION SHAFT



HYDRAULIC TOOL HOLDER



Product Description

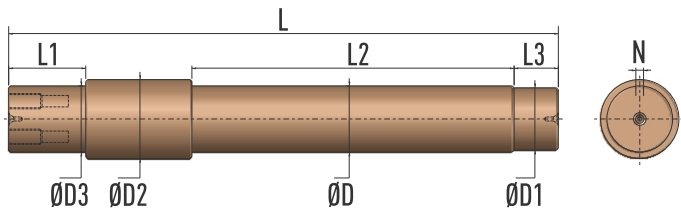
Our hydraulic expansion shaft product is for knife manufacturing and testing.

Max. Speed: 6000 rpm.



Highlight Features

- 1. Compared with regular shafts, hydraulic expansion shaft enables much smaller clearance and stabler clamping; therefore significantly increases the dynamic balancing accuracy for dynamic balancing equipment;
- 2. Advanced surface heat and electroplating treatment ensure high hardness and excellent wear resistance and great resistance to corrosion and rust;
- 3. Easy and quick pressurization with an Allen T wrench;
- 4. Offer customized products for special requirements.



Product Specifications

SKU	Product	D	D1	D2	D3	L	L1	L2	L3	N
-----	---------	---	----	----	----	---	----	----	----	---

G013 01003	DPH 1-1/2"	1-1/2"	37.1	62	52	425	61	210	70	6
------------	------------	--------	------	----	----	-----	----	-----	----	---

Please note that except for the dimensions marked in imperial, all the other dimensions in the above table are in metric (mm).



Product Description

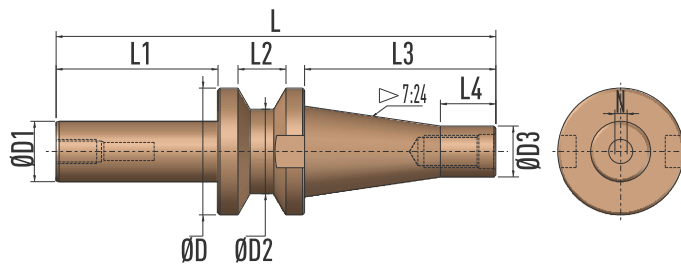
Our hydraulic tool holder product is for various woodworking processes including drilling and finishing.

Max. Speed: 25000 rpm.



Highlight Features

- 1. Compared with the regular tool holders, hydraulic tool holder allows for much smaller clearance and stabler clamping; therefore significantly increasing the processing accuracy and reducing vibration and wear of tools;
- 2. Provides higher clamping force than regular tool holders;
- 3. Easy and quick pressurization with an Allen T wrench;
- 4. Offer customized products for special requirements.



Product Specifications

SKU	Product	D	D1	D2	D3	L	L1	L2	L3	L4	N
-----	---------	---	----	----	----	---	----	----	----	----	---

G013 01001	NT40-D30-124	63	30	42	25.3	219	80	24	95.7	28	6
------------	--------------	----	----	----	------	-----	----	----	------	----	---

Please note that all the dimensions in the above table are in metric (mm).