

CUTTERHEADS |



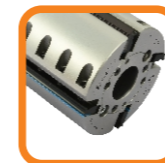
With high-quality materials, exquisite manufacturing technology, advanced CNC equipment, and thorough online and offline inspection, SuperSource offers cutterheads that are highly precise, reliable, cost-effective, and easy to operate. Used together with our interchangeable and grindable corrugated knives that far exceed the most stringent EU OEM standards, our cutterhead products can be operated at speeds up to 8,000 rpm and are competent for most wood profiling and surface processing applications.

Our cutterhead products are divided into straight bore cutterheads and hydraulic locking cutterheads according to the bore type, and are compatible with both corrugated knives and planer knives. In addition to the regular products presented in the catalogue, custom features and design (i.e., with customer choice of bore size, cutting angles, knife pockets, pocket depth, etc.) can be fulfilled upon request.

Cutterhead Series



Straight Bore Cutterheads - The most commonly used type of cutterheads in the market, assembled with moulders in a clearance fit. This line of cutterheads are simple in structure, therefore impose low system requirements on moulders.

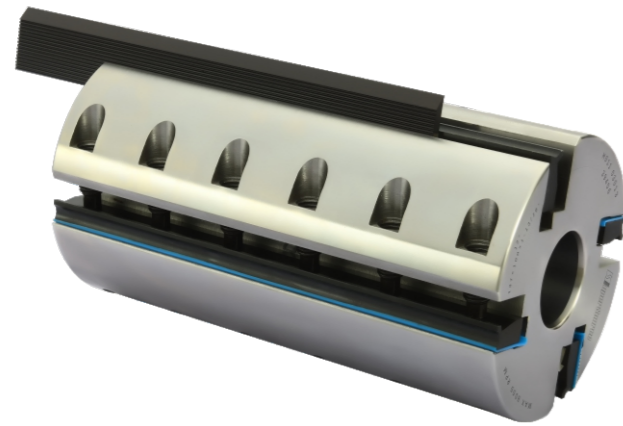


Hydraulic Locking Cutterheads - Typically reserved for high-speed machines that require the tightest machine tolerances to achieve the full benefit of the tooling. Compared with straight bore cutterhead, hydraulic locking cutterhead uses a pressurized sleeve to create a much tighter fit on grinder/moulder. Our hydraulic locking cutterheads are made from high-quality high strength steel alloy or aluminum alloy, CNC machined to exact tolerances and dynamic balanced to ISO G2.5 at speed up to 8000 rpm. These features provide refined surface finishes and the durability to withstand continuous use on high-speed moulders. We offer two types of hydraulic locking cutterheads: 1) Hydro-lock cutterhead, which is pressurized with a grease pump; and 2) Easy-lock cutterhead, which is pressurized with built-in screws.



SuperHelic™ Cutterheads - The SuperHelic™ system, which includes the SuperHelic™ cutterheads and the compatible SuperHelic™ corrugated knives, is our patented product. The SuperHelic™ system enables a unique continuous compound shear cutting action that slices the wood with low tool pressure and vibration. This helical cutting action is the ultimate way to surface wood. It can eliminate fuzzy and chipped-out grain defects, even for cross-grain or knotted wood, therefore requiring less or no further sanding processing. Our SuperHelic™ cutterheads are available in both straight bore and hydraulic locking bore types. The outer diameter of the cutterheads can be selected from 125 mm or 160 mm.





Product Description

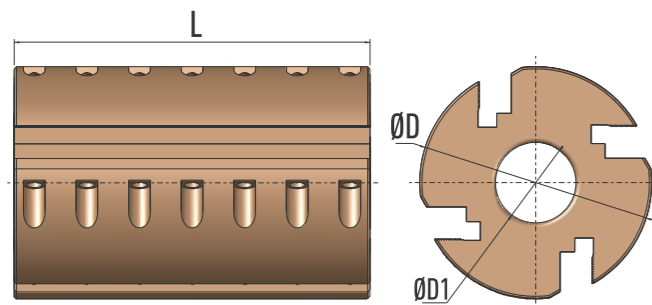
Straight bore cutterheads are assembled with moulders in a clearance fit. Our products are compatible with most single/double/four-sided planers/moulders in the market.

Maximum Operation Speed: 8000 rpm

Knives sold separately

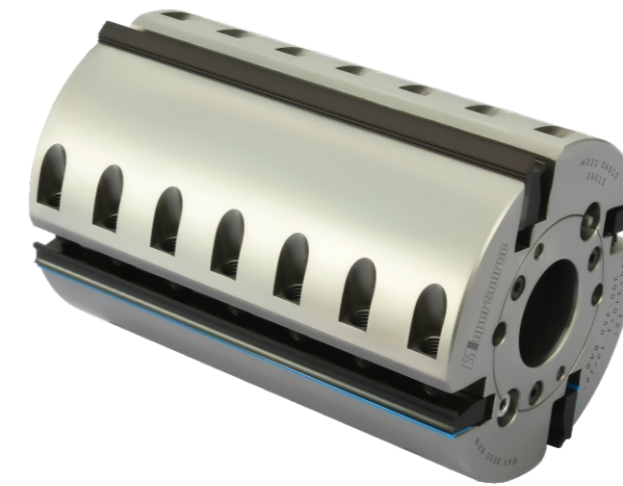
Highlight Features

1. In addition to high-strength steel alloy, we also offer cutterheads in aluminum alloy to reduce the weight of the assembly;
2. Structurally simple, therefore reliable and easy to use;
3. Cutting angles are available in 12°, 20°, or combination of two angles in the same cutterhead for processing both softwoods and hardwoods;
4. Easy assembly in a clearance fit, no additional adjustment required.



Product Specifications

SKU	H011
Product Type	Straight Bore Cutterhead
Cutterhead Material	High-strength Steel Alloy or Aluminum Alloy
Outer Diameter D	76 mm, 100 mm, 122 mm, or 137 mm
Bore Diameter D1	1-1/4", 1-1/2", 1-13/16", or 40 mm
Cutting Length L	50 - 310 mm
Cutting Angles	12°, 20°, or 12°/20°
Knife Pockets	2, 4, or 6



Product Description

Grease pump pressurized hydraulic locking cutterhead, compatible with most high-speed planers/moulders in the market, which is design for applications with high requirement on surface finish.

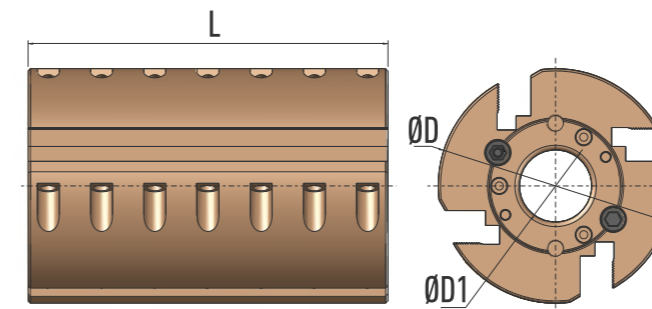
Maximum Operation Speed: 8000 rpm

Operation Pressure: 30 -35 MPa, Maximum Pressure: 40 MPa

Knives sold separately

Highlight Features

1. Hydraulic locking system ensures better centering and more stable fastening, therefore offers finer surface finishes;
2. Durable to withstand continuous operation on high-speed moulders at a high feeding rate;
3. Achieves extremely close clearance between bore and head once pressurized; eliminates sliding & running to prevent head and moulder deformation and wear;
4. Safe and convenient pressurization with a grease pump.



Product Specifications

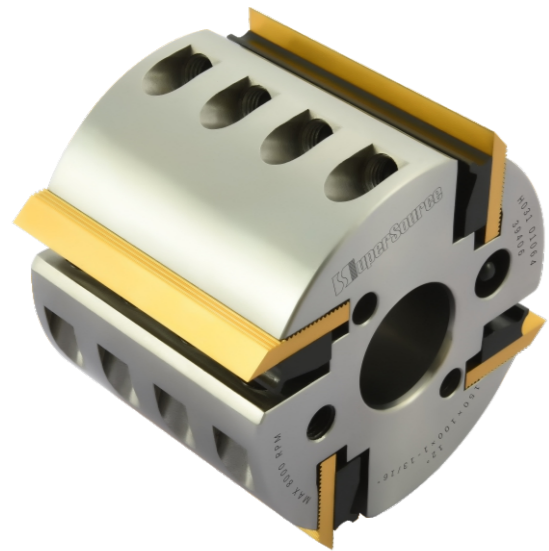
SKU	H021
Product Type	Hydro-lock Cutterhead
Cutterhead Material	High-strength Steel Alloy or Aluminum Alloy
Outer Diameter D	122 mm, 137 mm, 150 mm, 163 mm, or 195 mm
Bore Diameter D1	1-1/2", 1-13/16", 2-1/8", 40 mm, or 50 mm
Cutting Length L	60 - 310 mm
Cutting Angles	12°, 20°, or 12°/20°
Knife Pockets	4, 6, 8, 10, or 12

Accessories

SKU: H90109008
Metric Zerc Grease Inlet Fitting M10x1.0

SKU: H90109009
Metric Grease Release Valve M10x1.0





Product Description

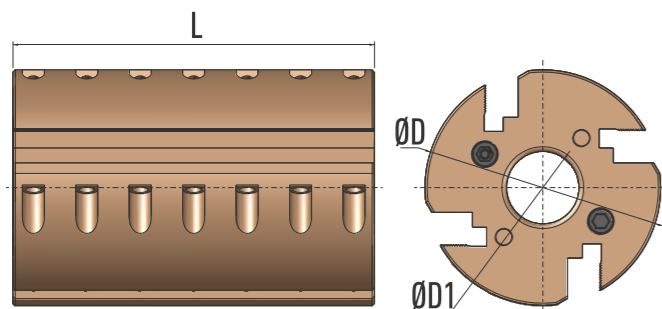
Screw pressurized hydraulic locking cutterhead, compatible with most high-speed planers/moulders in the market, which is design for applications with high requirement on surface finish.

Maximum Operation Speed: 8000 rpm

Knives sold separately

Highlight Features

1. Hydraulic locking system ensures better centering and more stable fastening, therefore offers finer surface finishes;
2. Durable to withstand continuous operation on high-speed moulders at a high feeding rate;
3. Achieves extremely close clearance between bore and head once pressurized; eliminates sliding & running to prevent head and moulder deformation and wear;
4. Easier pressurization with an Allen T wrench than a grease pump.



Product Specifications

SKU	H031 01-02
Product Type	Easy-lock Cutterhead
Cutterhead Material	High-strength Steel Alloy
Outer Diameter D	137 mm, 150 mm, or 163 mm
Bore Diameter D1	1-13/16", 2-1/8", 40 mm, or 50 mm
Cutting Length L	60 - 150 mm
Cutting Angles	12°, 20°, or 12°/20°
Knife Pockets	4, 6, or 8



Please contact us for more information regarding fully customized cutterheads!



Product Description

Offered in both straight bore and hydraulic locking types, best choice for applications that require fine surface finishes.

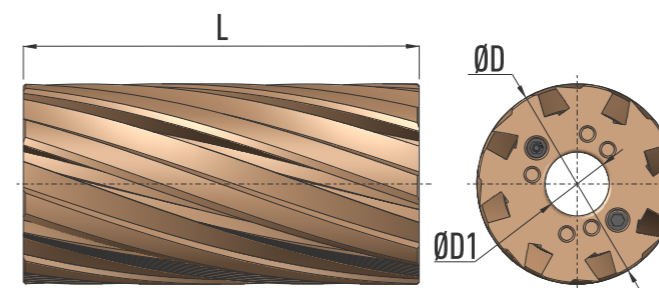
Maximum Operation Speed: 8000 rpm

Operation Pressure: 30 -35 MPa, Maximum Pressure: 40 MPa

Knives sold separately

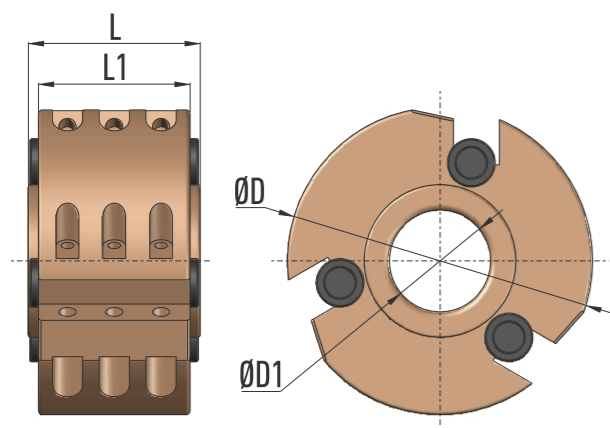
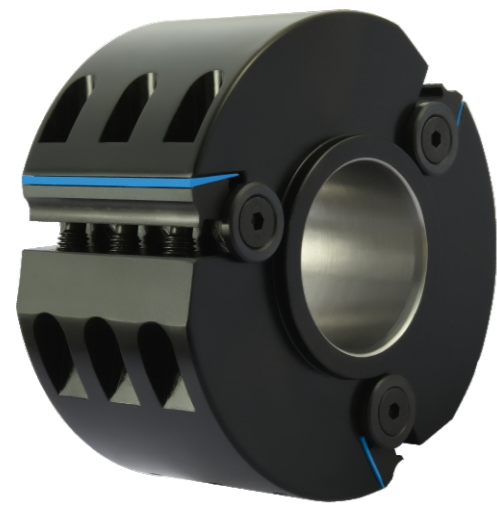
Highlight Features

1. Our patented products enable a unique continuous compound shear cutting action that slices the wood with low tool pressure and vibration;
2. Ultimate way to eliminate fuzzy and chipped out grain defects, even for cross-grain and knotted hardwood;
3. Helical structure promotes chip removal and heat dissipation, reduces vibration & noise, leads to a super-fine surface finish that requires less or no sanding processing;
4. Use together with our seamless spiral SuperHelic™ corrugated knives that are grindable and easy to assemble.



Product Specifications

SKU	H081 (Straight Bore) or H082 (Hydraulic locking)
Product Type	SuperHelic™ Cutterhead
Cutterhead Material	High-strength Steel Alloy or Aluminum Alloy
Outer Diameter D	125 mm or 160 mm
Bore Diameter D1	from 1-1/4" to 2-1/8", or from 40 mm to 50 mm
Cutting Length L	60 - 310 mm
Cutting Angles	18° or 20°
Knife Pockets	4, 6, or 8



Product Description

These versatile heads are designed for applications including end work on flooring and cabinet door profiles, compatible with most spindle shapers in the market.

Maximum Operation Speed: 8000 rpm

Operation Pressure: 30 -35 MPa, Maximum Pressure: 40 MPa

Knives sold separately

Highlight Features

1. Special manufacturing processes ensure extremely precise positioning of profile knives in the knife pockets;
2. Low vibration and high precision during profiling lead to fine surface finishes;
3. Designed to accommodate a wide variety of profiles, including deep profiles, easy to assemble and disassemble profile knives;
4. Available in both straight bore and hydraulic locking types.

Product Specifications

SKU	H013 (Straight Bore) or H023 (Hydraulic locking)
Product Type	Multi-profile Insert Cutterhead
Cutterhead Material	High-strength Steel Alloy
Outer Diameter D	83 mm, 120.7 mm, or 150 mm
Bore Diameter D1	from 1-1/4" to 1-13/16" or from 40 mm to 50 mm
Cutterhead Width	54 mm, 68 mm, 73 mm
Cutting Length L1	40 - 60 mm
Cutting Angles	12°
Knife Pockets	3 or 6

