

## Superhelic Cutter Heads

--- Hydro-Lock Bore

### Application:

For surfacing and planing of solid woods which demand a superior finishing surface.

### Features:

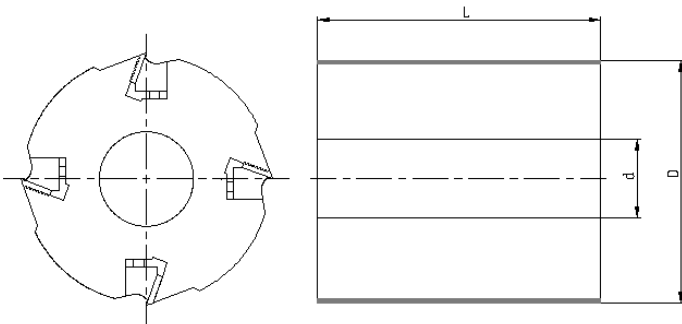
- Innovative design (patented).
- Replaceable non-segmented corrugated back twisted carbide blade.
- One continuous smooth sharing cutting without interruption.
- Reduce tear-outs in hardwoods, cross-grained and knotty material greatly.
- Significant noise, downtime and spindle bearing wear reduction.
- Working Pressure: 300 – 350 bars
- Max Pressure: 400 bars

Supply without knives.

ID No.	D	L	d	Z	N Max
H082 02031	125	60	1-1/2"	2	8000
H082 02032	125	100	1-1/2"	2	8000
H082 02033	125	130	1-1/2"	2	8000
H082 02034	125	150	1-1/2"	2	8000
H082 02035	125	180	1-1/2"	2	8000
H082 02036	125	230	1-1/2"	2	8000
H082 02041	125	60	40	2	8000
H082 02042	125	100	40	2	8000
H082 02043	125	130	40	2	8000
H082 02044	125	150	40	2	8000
H082 02045	125	180	40	2	8000
H082 02046	125	230	40	2	8000
H082 02001	125	60	1-1/2"	4	8000
H082 02002	125	100	1-1/2"	4	8000
H082 02003	125	130	1-1/2"	4	8000
H082 02004	125	150	1-1/2"	4	8000
H082 02005	125	180	1-1/2"	4	8000
H082 02006	125	230	1-1/2"	4	8000

ID No.	D	L	d	Z	N Max
H082 02011	125	60	40	4	8000
H082 02012	125	100	40	4	8000
H082 02013	125	130	40	4	8000
H082 02014	125	150	40	4	8000
H082 02015	125	180	40	4	8000
H082 02016	125	230	40	4	8000
H082 06011	160	60	1-13/16"	4	8000
H082 06012	160	100	1-13/16"	4	8000
H082 06013	160	130	1-13/16"	4	8000
H082 06014	160	150	1-13/16"	4	8000
H082 06015	160	180	1-13/16"	4	8000
H082 06016	160	230	1-13/16"	4	8000
H082 06019	160	310	1-13/16"	4	8000
H082 06021	160	60	50	4	8000
H082 06022	160	100	50	4	8000
H082 06023	160	130	50	4	8000
H082 06024	160	150	50	4	8000
H082 06025	160	180	50	4	8000
H082 06026	160	230	50	4	8000
H082 06029	160	310	50	4	8000
H082 06031	160	60	2-18"	4	8000
H082 06032	160	100	2-18"	4	8000
H082 06033	160	130	2-18"	4	8000
H082 06034	160	150	2-18"	4	8000
H082 06035	160	180	2-18"	4	8000
H082 06036	160	230	2-18"	4	8000
H082 06039	160	310	2-18"	4	8000
H082 06041	160	60	1-13/16"	6	8000
H082 06042	160	100	1-13/16"	6	8000
H082 06043	160	130	1-13/16"	6	8000
H082 06044	160	150	1-13/16"	6	8000
H082 06045	160	180	1-13/16"	6	8000
H082 06046	160	230	1-13/16"	6	8000
H082 06049	160	310	1-13/16"	6	8000
H082 06051	160	60	50	6	8000
H082 06052	160	100	50	6	8000

ID No.	D	L	d	Z	N Max
H082 06053	160	130	50	6	8000
H082 06054	160	150	50	6	8000
H082 06055	160	180	50	6	8000
H082 06056	160	230	50	6	8000
H082 06059	160	310	50	6	8000
H082 06061	160	60	2-18"	6	8000
H082 06062	160	100	2-18"	6	8000
H082 06063	160	130	2-18"	6	8000
H082 06064	160	150	2-18"	6	8000
H082 06065	160	180	2-18"	6	8000
H082 06066	160	230	2-18"	6	8000
H082 06069	160	310	2-18"	6	8000
H082 06071	160	60	1-13/16"	8	8000
H082 06072	160	100	1-13/16"	8	8000
H082 06073	160	130	1-13/16"	8	8000
H082 06074	160	150	1-13/16"	8	8000
H082 06075	160	180	1-13/16"	8	8000
H082 06076	160	230	1-13/16"	8	8000
H082 06079	160	310	1-13/16"	8	8000
H082 06081	160	60	50	8	8000
H082 06082	160	100	50	8	8000
H082 06083	160	130	50	8	8000
H082 06084	160	150	50	8	8000
H082 06085	160	180	50	8	8000
H082 06086	160	230	50	8	8000
H082 06089	160	310	50	8	8000
H082 06091	160	60	2-18"	8	8000
H082 06092	160	100	2-18"	8	8000
H082 06093	160	130	2-18"	8	8000
H082 06094	160	150	2-18"	8	8000
H082 06095	160	180	2-18"	8	8000
H082 06096	160	230	2-18"	8	8000
H082 06099	160	310	2-18"	8	8000



## Superhelic Cutter Heads

--- Straight Bore

### Application:

For surfacing and planing of solid woods which demand a superior finishing surface.

### Features:

- Innovative design (patented).
- Replaceable non-segmented corrugated back twisted carbide blade.
- One continues smooth sharing cutting without interruption.
- Reduce tear-outs in hardwoods, cross-grained and knotty material greatly.
- Significant noise, downtime and spindle bearing wear reduction.

Supply without knives.

ID No.	D	L	d	Z	N Max
H081 02031	125	60	1-1/2"	2	9000
H081 02032	125	100	1-1/2"	2	9000
H081 02033	125	130	1-1/2"	2	9000
H081 02034	125	150	1-1/2"	2	9000
H081 02035	125	180	1-1/2"	2	9000
H081 02036	125	230	1-1/2"	2	9000
H081 02051	125	60	1-1/2"	3	9000
H081 02052	125	100	1-1/2"	3	9000
H081 02053	125	130	1-1/2"	3	9000
H081 02054	125	150	1-1/2"	3	9000
H081 02055	125	180	1-1/2"	3	9000
H081 02056	125	230	1-1/2"	3	9000
H081 02001	125	60	1-1/2"	4	9000
H081 02002	125	100	1-1/2"	4	9000
H081 02003	125	130	1-1/2"	4	9000
H081 02004	125	150	1-1/2"	4	9000
H081 02005	125	180	1-1/2"	4	9000
H081 02006	125	230	1-1/2"	4	9000

<b>ID No.</b>	<b>D</b>	<b>L</b>	<b>d</b>	<b>Z</b>	<b>N Max</b>
H081 02041	125	60	40	2	9000
H081 02042	125	100	40	2	9000
H081 02043	125	130	40	2	9000
H081 02044	125	150	40	2	9000
H081 02045	125	180	40	2	9000
H081 02046	125	230	40	2	9000
H081 02061	125	60	40	3	9000
H081 02062	125	100	40	3	9000
H081 02063	125	130	40	3	9000
H081 02064	125	150	40	3	9000
H081 02065	125	180	40	3	9000
H081 02066	125	230	40	3	9000
H081 02011	125	60	40	4	9000
H081 02012	125	100	40	4	9000
H081 02013	125	130	40	4	9000
H081 02014	125	150	40	4	9000
H081 02015	125	180	40	4	9000
H081 02016	125	230	40	4	9000



## Superhelic Knives

### Application:

For surfacing and planing of solid woods which demand a superior finishing surface.

### Features:

- Innovative design (patented).
- Replaceable non-segmented corrugated back twisted carbide blade.
- One continuous smooth shaving cutting without interruption.
- Reduce tear-outs in hardwoods, cross-grained and knotty material greatly.
- Significant noise, downtime and spindle bearing wear reduction.

Size D ( Cutterhead Diameter) x L (Cutterhead Length)	ID No. Solid Carbide	ID No. HSS
125 x 60	K081 02001	K082 02001
125 x 100	K081 02002	K082 02002
125 x 130	K081 02003	K082 02003
125 x 150	K081 02004	K082 02004
125 x 180	K081 02005	K082 02005
125 x 230	K081 02006	K082 02006
160 x 60	K081 06001	K082 06001
160 x 100	K081 06002	K082 06002
160 x 130	K081 06003	K082 06003
160 x 150	K081 06004	K082 06004
160 x 180	K081 06005	K082 06005
160 x 230	K081 06006	K082 06006
160 x 310	K081 06009	K082 06009